



GY

BRAND
DUCTILE IRON PIPES & FITTINGS

G.Y.牌離心球鐵管及配件系列
BSEN598/ BSEN545/ BS4772



俊業五金鑄造有限公司
Gent-Year Metal Foundry Limited

公司簡介

INTRODUCTION

本公司是經銷水喉、渠務及建築行業使用的生鐵、球鐵產品的專業公司，其創立的品牌“G.Y.”牌各類產品確保質量，避免與其他牌子混淆。主要產品有符合BS416、BS437、BS1211、BS4622和EN877標準的(規格 $\phi 50\text{mm}$ 至 $\phi 700\text{mm}$)灰鐵鑄管及配件；符合BS497/BSEN124標準的沙井蓋板及明渠梳冷；還有符合BSEN598、BSEN545/BS4772的球鐵鑄管及配件以及可按客戶的要求或來圖生產特殊的非標準產品及不銹鋼精鑄產品等。

本公司在廣東省中山市自設有佔地10,000M²的鑄造工廠，該廠擁有經驗豐富的優秀技術管理人員及工人，現代化設備的廠房，用先進的技術生產符合客戶要求的高質產品，該廠已成功榮獲ISO9001:2008質量管理體系認證證書。

為保障客戶急需，本公司在新界元朗設有佔地6,000M²的倉庫，儲存足夠應付日常需求的各類產品，保證及時送貨到地盤。

多年來，隨著產品質量及服務質素的不斷提高，“G.Y.”牌產品獲得本港多間大型發展商、承建商及政府有關部門青睞。本著精益求精的精神，並參考客戶反饋的意見，繼續對產品進行改進，力求做到更好。本公司一貫秉承“品種齊備，質量第一，送貨及時”的宗旨，為廣大用戶提供優質的產品及服務。

Our company specializes in manufacturing and supplying of high-quality cast iron and ductile iron drainpipe products for various drainage and construction projects. Our “G.Y.” brand provides a wide variety of products with high quality, and is easily distinguished from the others. The main products include cast iron pipes and fittings, which comply with the BS416, BS437, BS1211, BS4622 and EN877 standards ($\phi 50\text{mm}$ – $\phi 700\text{mm}$), manhole covers, frames and channel gratings, which meet BS497/BSEN124 standards, and ductile iron pipes and fittings, which fulfill the BSEN598 and BSEN545/BS4772 standards. We also produce tailor-made products, including stainless steel products, in accordance with client's specifications or drawings.

We have a 10,000 sq.m. foundry in Zhongshan, Guangdong, China for manufacturing high-quality products. Run by the excellent technicians and administrative staff, the foundry fully makes use of the latest facilities and techniques in production processes to meet all client's requirements. The foundry was successfully awarded the ISO9001:2008 Quality Management System Certificate.

To address the urgent needs of our clients, our company also has a 6,000 sq.m. storage site in Yuen Long, N.T., Hong Kong with sufficient high-quality stock ready for timely delivery to any sites in Hong Kong.

Over the years, with the continuous improvement in the quality of products and services, our “G.Y.” products have been well recognized and adopted by many large developers and contractors.



CERTIFICATE & TEST REPORT 證書及報告

NUTEK SYSTEMS, LTD.
TEST REPORT

TITLE: Testing of Pipe
OUR REFERENCE NO.: B1428A
DESCRIPTION OF SAMPLE: 200mm Ductile iron pipe, class K9
SAMPLE SUBMITTED BY: Gent Year Metal Foundry Ltd.
Room 1101, 11/F, Shing Shun Building,
No.43, Castle Peak Road, Yuen Long,
N.T., Hong Kong.
BRAND: G.Y.
BODY MARKINGS: G.Y. BSEN045 K9 DN200
METHOD OF TEST: BSEN045: 2006, Class K9
PERIOD OF TEST: 21st to 27th April 2010
RESULTS: (apply only to the sample tested)

1. DIMENSIONS (in millimeters)

	Sample	BSEN Requirement
Nominal size	200	-
External diameter	Minimum 197.5 Maximum 200	197.5 200
Internal diameter	Minimum 175.0	175.0
Minimum wall thickness (excluding current lining)	Minimum 6.7	6.7
Thickness of current lining	Minimum 4.8	4.8

2. HYDROSTATIC PRESSURE TEST

Sample	Test pressure (bar)	Duration (s)	Remark
BSEN Requirement	30	15	Pass

NUTEK SYSTEMS, LTD.
TEST REPORT

TITLE: Testing of Pipe
OUR REFERENCE NO.: B1428B
DESCRIPTION OF SAMPLE: 100mm Ductile iron pipe, class K9
SAMPLE SUBMITTED BY: Gent Year Metal Foundry Ltd.
Room 1101, 11/F, Shing Shun Building,
No.43, Castle Peak Road, Yuen Long,
N.T., Hong Kong.
BRAND: G.Y.
BODY MARKINGS: G.Y. BSEN045 K9 DN100
METHOD OF TEST: BSEN045: 2006, Class K9
PERIOD OF TEST: 21st to 27th April 2010
RESULTS: (apply only to the sample tested)

1. DIMENSIONS (in millimeters)

	Sample	BSEN Requirement
Nominal size	100	-
External diameter	Minimum 97.5 Maximum 100	97.5 100
Internal diameter	Minimum 75.0	75.0
Minimum wall thickness (excluding current lining)	Minimum 6.7	6.7
Thickness of current lining	Minimum 4.8	4.8

2. HYDROSTATIC PRESSURE TEST

Sample	Test pressure (bar)	Duration (s)	Remark
BSEN Requirement	30	15	Pass

NUTEK SYSTEMS, LTD.
TEST REPORT

TITLE: Testing of Pipe
OUR REFERENCE NO.: B1428C
DESCRIPTION OF SAMPLE: 150mm Ductile iron pipe, class K9
SAMPLE SUBMITTED BY: Gent Year Metal Foundry Ltd.
Room 1101, 11/F, Shing Shun Building,
No.43, Castle Peak Road, Yuen Long,
N.T., Hong Kong.
BRAND: G.Y.
BODY MARKINGS: G.Y. BSEN045 K9 DN150
METHOD OF TEST: BSEN045: 2006, Class K9
PERIOD OF TEST: 21st to 27th April 2010
RESULTS: (apply only to the sample tested)

1. DIMENSIONS (in millimeters)

	Sample	BSEN Requirement
Nominal size	150	-
External diameter	Minimum 147.5 Maximum 150	147.5 150
Internal diameter	Minimum 125.0	125.0
Minimum wall thickness (excluding current lining)	Minimum 6.7	6.7
Thickness of current lining	Minimum 4.8	4.8

2. HYDROSTATIC PRESSURE TEST

Sample	Test pressure (bar)	Duration (s)	Remark
BSEN Requirement	30	15	Pass

NUTEK SYSTEMS, LTD.
TEST REPORT

TITLE: Testing of Pipe
OUR REFERENCE NO.: B1428D
DESCRIPTION OF SAMPLE: 250mm Ductile iron pipe, class K9
SAMPLE SUBMITTED BY: Gent Year Metal Foundry Ltd.
Room 1101, 11/F, Shing Shun Building,
No.43, Castle Peak Road, Yuen Long,
N.T., Hong Kong.
BRAND: G.Y.
BODY MARKINGS: G.Y. BSEN045 K9 DN250
METHOD OF TEST: BSEN045: 2006, Class K9
PERIOD OF TEST: 21st to 27th April 2010
RESULTS: (apply only to the sample tested)

1. DIMENSIONS (in millimeters)

	Sample	BSEN Requirement
Nominal size	250	-
External diameter	Minimum 247.5 Maximum 250	247.5 250
Internal diameter	Minimum 225.0	225.0
Minimum wall thickness (excluding current lining)	Minimum 5.7	5.7
Thickness of current lining	Minimum 4.8	4.8

2. HYDROSTATIC PRESSURE TEST

Sample	Test pressure (bar)	Duration (s)	Remark
BSEN Requirement	30	15	Pass

NUTEK SYSTEMS, LTD.
TEST REPORT

TITLE: Testing of Pipe
OUR REFERENCE NO.: B1428E
DESCRIPTION OF SAMPLE: 250mm Ductile iron pipe, class K9
SAMPLE SUBMITTED BY: Gent Year Metal Foundry Ltd.
Room 1101, 11/F, Shing Shun Building,
No.43, Castle Peak Road, Yuen Long,
N.T., Hong Kong.
BRAND: G.Y.
BODY MARKINGS: G.Y. BSEN045 K9 DN250
METHOD OF TEST: BSEN045: 2006, Class K9
PERIOD OF TEST: 21st to 27th April 2010
RESULTS: (apply only to the sample tested)

1. DIMENSIONS (in millimeters)

	Sample	BSEN Requirement
Nominal size	250	-
External diameter	Minimum 247.5 Maximum 250	247.5 250
Internal diameter	Minimum 225.0	225.0
Minimum wall thickness (excluding current lining)	Minimum 5.7	5.7
Thickness of current lining	Minimum 4.8	4.8

2. HYDROSTATIC PRESSURE TEST

Sample	Test pressure (bar)	Duration (s)	Remark
BSEN Requirement	30	15	Pass

“G.Y.”牌球鐵 產品優點

THE EXCELLENT PROPERTIES OF THE “G.Y.” BRAND DUCTILE IRON PRODUCTS

可延性鑄鐵又名球狀石墨鑄鐵如下優良性能：

- 壁薄；
- 與鋼媲美的高強度和韌性可承受較高負荷；
- 良好的延伸性，可承受較高的衝擊力；
- 具備與灰鑄鐵相同的良好耐腐蝕性；
- 對複雜地形有良好的適應性；
- 良好的機械加工性能；
- 阻力小；
- 安裝方便；
- 壽命長。

Ductile cast iron, also known as “spheroidal graphite cast iron,” has the following outstanding properties:

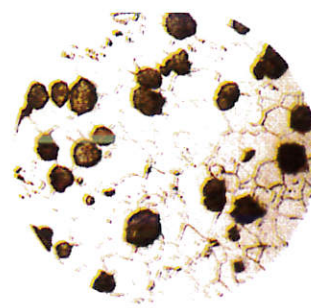
- Thin wall
- High strength and tenacity to withstand high pressure comparing to steel.
- High ductility to resist strong impact.
- As highly resistant to corrosion as grey cast iron.
- High flexibility to unstable ground and complicated landforms
- Excellent mechanical properties.
- Low resistance
- Easy installation
- Long duration



Grey Iron Metallograph
灰鑄鐵金相



Ductile Cast Iron Metallograph
(during casting)
球墨鑄鐵管基體組織金相
(鑄造中)

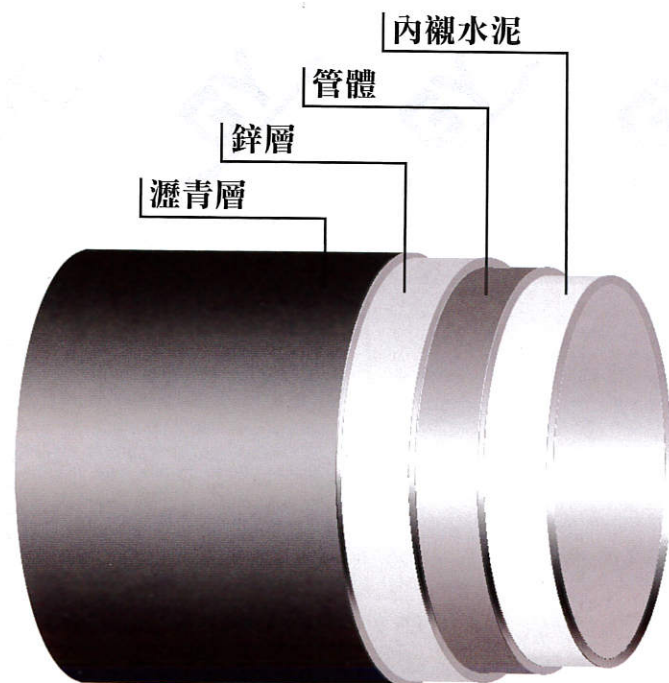


Ductile Cast Iron Metallograph
(after annealing)
球墨鑄鐵管基體組織金相
(退火後)

在可延性鑄鐵的顯微結構中，石墨呈球狀分佈在鐵素體基體中，使其具有如上出眾的優良特點，而在灰鑄鐵中石墨呈片狀分佈，對鐵素體基體有割裂的影響。

Its microstructure, a sphere of graphite in the metal matrix, projects the outstanding characteristics of ductile cast iron. On the other hand, in the grey cast iron, graphite is in a flaky shape which causes the iron matrix to become brittler and easier to crack.

THE MANUFACTURE STANDARD OF THE “G.Y.” BRAND DUCTILE IRON PRODUCTS



產品內外防護

Protection of Pipes and Fittings

外防護：先噴鋅，採用ISO8179標準，後塗瀝青漆。

External Coating:

Zinc spraying, which is the standard of ISO8179, plus bituminous paint can provide basic protection against most soil conditions.

內防護：水泥砂漿內襯，採用ISO4179標準。可按客戶要求提供內襯環氧陶瓷、環氧煤瀝青、環氧樹脂漆、環氧樹脂粉末、聚氨脂、聚乙稀等其它保護性塗層。

Internal Lining:

A cement mortar lining is applied to every pipe to meet the requirements of ISO4179. We may also offer further special protective layers such as epoxy ceramics, epoxy bitumen, epoxy resin, polyurethane, polyethylene or other protective linings or coatings according to customers' requirements.

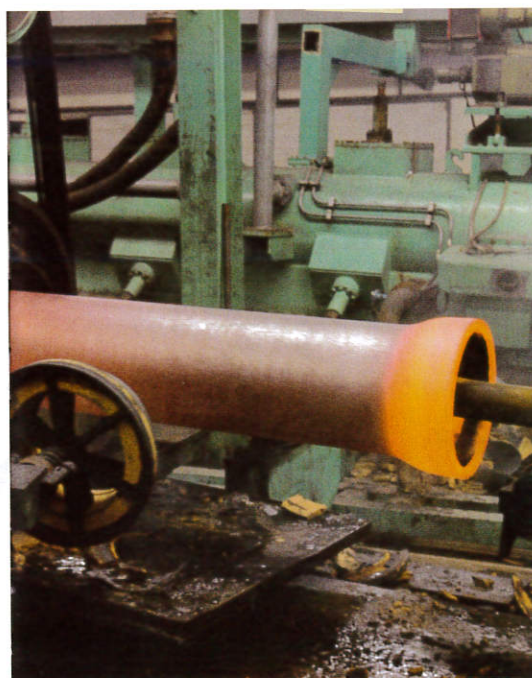
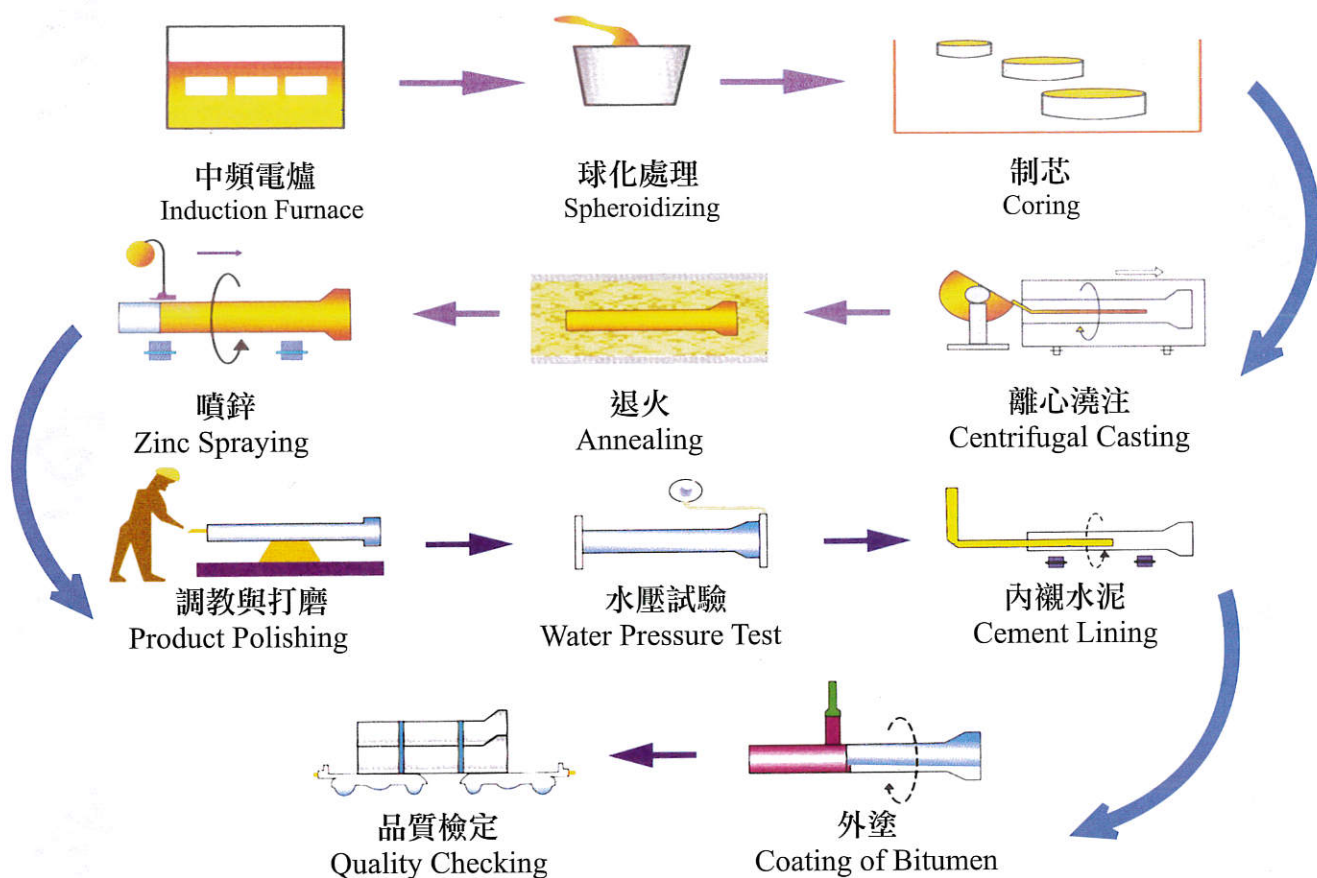
ISO4179水泥內塗襯標準

Specifications of the ISO4179 Cement-Lining:

喉管直徑 DN (mm)	塗襯厚度Cement-Lining Thickness (mm)		
	普通厚度 Nominal	平均厚度 Average	最小厚度 Minimum at any Point
80~300	3	2.5	1.5
400~600	5	4.5	2.5
700~800	6	5.5	3.0

“G.Y.”牌球墨鑄鐵管 生產流程圖

PRODUCTION FLOW CHART OF THE “G.Y.” BRAND DUCTILE IRON PIPES



TRANSPORTATION AND STORAGE OF THE “G.Y.” BRAND DUCTILE IRON PRODUCTS



吊裝方式 Hoisting



運輸 Transportation



貨倉堆放 Storage

運輸、儲存：

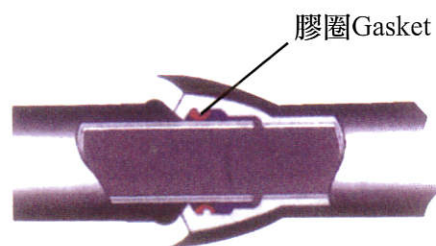
1. 球鐵管在裝車時，伸出車體外部份不得超過球鐵管長度的四分之一。
2. 球鐵管在搬運和堆放過程中，應防止碰傷、變形和損壞。
3. 存放球鐵管的地面應平坦鬆軟，硬地面應墊木塊。
4. 管架上每層球鐵管應將承、插口相間平放，並用木塊墊好，上下兩層管方向垂直。

Transportation and storage:

1. The pipes loaded should not extend beyond the rear of the vehicle by more than one-fourth of the total length.
2. Prevent the pipes from collision, deformation and damage while transiting and stacking.
3. Make sure the ground for storing the pipes is flat. However, if the ground is found to be too hard, please pave the ground with woodblocks.
4. The pipes on every storey should be put in the horizontal and vertical directions alternately. A piece of woodblock should be put between each storey of pipes. The upper storey of pipes should be perpendicular to the lower ones.

“G.Y.”牌球墨鑄鐵管規格

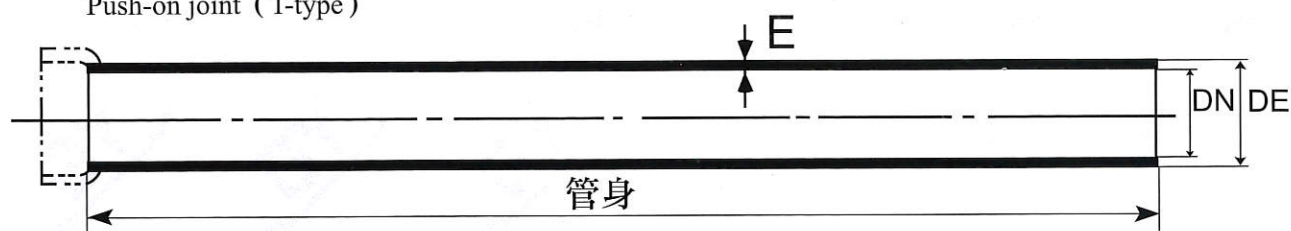
SPECIFICATIONS OF THE “G.Y.” BRAND DUCTILE IRON PIPES



T型滑入式
Push-on joint (T-type)

T型接口具柔性，使管道可以適應複雜地形的變化，即使遇到較小的彎度時，也可以在不使用管件的情況下，作出簡單的調整。

The Tyton joint is flexible to unstable ground and complicated landforms. Even if there is a minor deflection, it is easy to adjust the pipelines without any fittings.



T 型接口球墨鑄鐵管重量(K9 級)(包內襯水泥)

Weight of K9 Tyton-Joint Ductile Iron Pipes (Including Cement)

直管部份 Barrel			每米重量 Weight per meter (kg)	約總重量 Total Weight (kg)	
DN (mm)	DE (mm)	E (mm)		管身長 5.5M Barrel	管身長 6.0M Barrel
80	98	6.0	14.80	77	85
100	118	6.1	18.17	97	105
150	170	6.3	27.33	147	160
200	222	6.4	37.00	198	215
250	274	6.8	48.33	260	283
300	326	7.2	60.67	328	355
350	378	7.7	80.34	435	470
400	429	8.1	95.50	513	560
450	480	8.6	113.10	610	665
500	532	9.0	130.17	703	766
600	635	9.9	169.67	918	1000
700	738	10.8	218.67	1188	1295
800	842	11.7	265.67	1438	1570
900	945	12.6	319.50	1743	1900
1000	1048	13.5	378.00	2063	2250

- 上述尺寸及重量僅供參考。
- 鑄造產品允許鑄造公差。
- 產品繁多，不能盡錄，同時可生產非標準尺寸，歡迎查詢。
- 本公司擁有對上述產品各部位尺寸的最終解釋權。

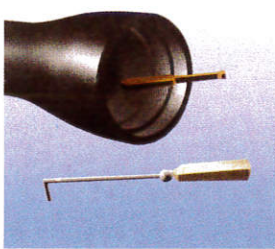
- The above dimensions and weights are for reference only.
- Casting tolerance is allowed for all casting products.
- Apart from products with the above dimensions, there is still a wide variety of products. We may also produce non-standard products according to customers' requirements. For more, please contact us.
- The measurement of every part of our products is subject to the interpretation of our company which shall be final and conclusive.

INSTALLATION INSTRUCTIONS OF THE “G.Y.” BRAND DUCTILE IRON PRODUCTS

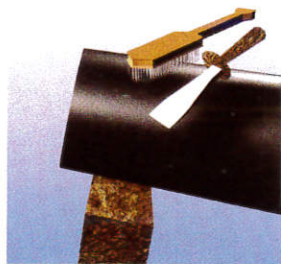
1. 仔細地將承口(梳杰頭)內腔及插口端(管尾部)外表的雜物清理乾淨，尤其是放置膠圈的槽內。(圖1、圖2)
2. 將膠圈清理乾淨，再放入膠槽內，並壓到位。
3. 把潤滑劑塗在膠圈及插口端至110mm處。(圖3)
4. 調整管及配件的位置，對正中心線。
5. 將插口插入承口內。
6. 將管拉入時，請參考管內插口尾部的兩條白線。
把管拉過第一條參考線消失和第二條參考線前。(圖4及圖5)

1. Carefully clean the inner wall of the socket, the surface of the spigot, especially the chamfer for placing the gasket. (Figure 1, 2)
2. Clean the gasket. Then insert and position the gasket.
3. Apply lubricating paste to the exposed surface of the gasket, the spigot, and the inner surface of the pipe for the length of 110mm. (Figure 3)
4. Adjust the positions of the pipe and fittings and make sure axes are aligned.
5. Center and insert the spigot into the socket.
6. Pull the pipe to the correct position by referring to the two white lines marked at the end of the spigot. Pull the pipe until the first line disappears and the pipe touches the second white line. (Figure 4&5)

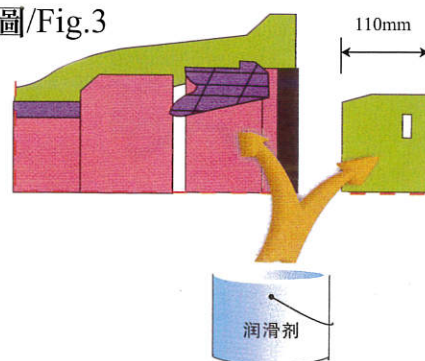
圖/Fig.1



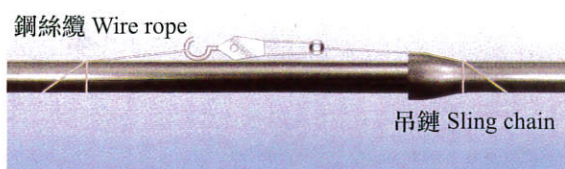
圖/Fig.2



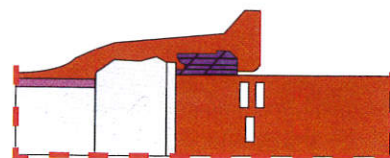
圖/Fig.3



圖/Fig.4



圖/Fig.5

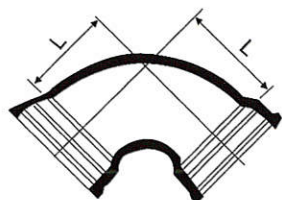


“G.Y.”牌球墨鑄鐵 配件系列

“G.Y.” BRAND DUCTILE IRON FITTINGS BSEN598/BSEN545/BS4772

“T” 型承口配件 Tyton Joint Fitting

雙頭承插90°彎管
Double Socket 90° Bend

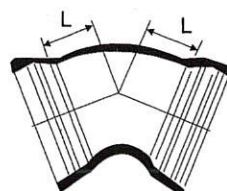


K=12

Unit:mm

NOMINAL DIAMETER	DIMENSIONS
DN	L
80	100
100	120
150	170
200	220
250	270
300	320

雙頭承插45°彎管
Double Socket 45° Bend

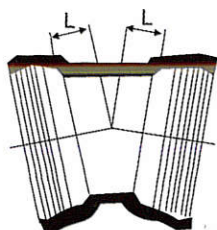


K=12

Unit:mm

NOMINAL DIAMETER	DIMENSIONS
DN	L
80	55
100	65
150	65
200	110
250	130
300	150

雙頭承插22.5°彎管
Double Socket 22.5° Bend



K=12

Unit:mm

NOMINAL DIAMETER	DIMENSIONS
DN	L
80	40
100	40
150	55
200	65
250	75
300	85

雙頭承插11.25°彎管
Double Socket 11.25° Bend



K=12

Unit:mm

NOMINAL DIAMETER	DIMENSIONS
DN	L
80	30
100	30
150	35
200	40
250	50
300	55

- 上述尺寸及重量僅供參考。
- 鑄造產品允許鑄造公差。
- 產品繁多，不能盡錄，同時可生產非標準尺寸，歡迎查詢。
- 本公司擁有對上述產品各部位尺寸的最終解釋權。

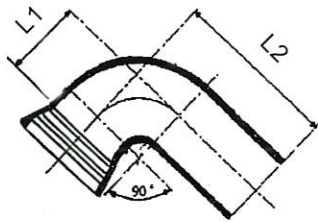
- The above dimensions and weights are for reference only.
- Casting tolerance is allowed for all casting products.
- Apart from products with the above dimensions, there is still a wide variety of products. We may also produce non-standard products according to customers' requirements. For more, please contact us.
- The measurement of every part of our products is subject to the interpretation of our company which shall be final and conclusive.

“G.Y.” BRAND DUCTILE IRON FITTINGS BSEN598/BSEN545/BS4772

“T” 型承口配件 Tyton Joint Fitting

單頭承插90°大彎管

Single Socket Spigot 90° Radius Bend



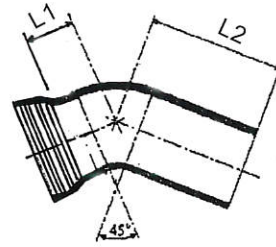
K=12

Unit: mm

NOMINAL DIAMETER	DIMENSIONS	
DN	L1	L2
80	100	250
100	120	270
150	170	370
200	220	420
250	270	470
300	320	520

單頭承插45°大彎管

Single Socket Spigot 45° Radius Bend



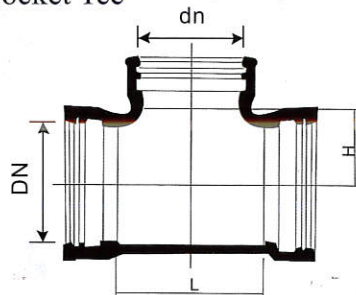
K=12

Unit: mm

NOMINAL DIAMETER	DIMENSIONS	
DN	L1	L2
80	55	205
100	65	215
150	85	285
200	110	310
250	130	330
300	150	350

三頭承插三通管

All Socket Tee



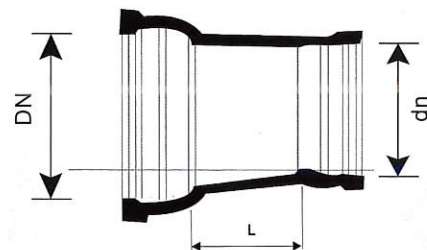
K=12

Unit: mm

NOMINAL DIAMETER	DIMENSIONS		
DN	dn	L	H
80	80	170	85
100	80	170	95
100	100	190	95
150	80	170	120
150	100	195	120
150	150	255	125
200	80	175	145
200	100	200	145
200	150	255	150
200	200	315	155

雙頭承插漸縮管(刁士)

Double Socket Taper



K=12

Unit: mm

NOMINAL DIAMETER	DIMENSIONS	
DN	dn	L
100	80	90
150	80	190
150	100	150
200	100	250
200	150	150
250	150	250
250	200	150
300	150	350
300	200	250
300	250	150

- 上述尺寸及重量僅供參考。
- 鑄造產品允許鑄造公差。
- 產品繁多，不能盡錄，同時可生產非標準尺寸，歡迎查詢。
- 本公司擁有對上述產品各部位尺寸的最終解釋權。

- The above dimensions and weights are for reference only.
- Casting tolerance is allowed for all casting products.
- Apart from products with the above dimensions, there is still a wide variety of products. We may also produce non-standard products according to customers' requirements. For more, please contact us.
- The measurement of every part of our products is subject to the interpretation of our company which shall be final and conclusive.

工作範圍 JOB REFERENCE

私人發展商 Private Developers

發展商 Developers



新鴻基地產發展有限公司
SUN HUNG KAI PROPERTIES LTD

新鴻基/嘉里建設有限公司 Kerry Properties Limited/
百利保集團有限公司 Paliburg Holdings Limited
信和集團 Sino Group / 港鐵 MTR
信和集團 / 市區重建局
Sino Group / Urban Renewal Authority
信和集團 Sino Group

嘉里建設 Kerry Properties Limited

合和實業 Hopewell Holdings Limited

長江實業(集團)有限公司
Cheung Kong (Holdings) Limited

長江實業(集團)有限公司 / 港鐵
Cheung Kong (Holdings) Limited / MTR

長江實業(集團)有限公司 / 南豐集團
Cheung Kong (Holdings) Limited / Nan Fung Group

長江實業(集團)有限公司 / 港鐵 / 南豐集團
Cheung Kong (Holdings) Limited /

MTR / Nan Fung Group

泛海國際集團 Asia Standard International Group

置地集團 Hongkong Land

華人置業集團 Chinese Estates Group

羅氏地產集團 Laws Properties Group

華懋集團 Chinachem Group

爪哇集團 Sea Group

凱聯國際酒店有限公司

Associated International Hotels Limited

太古地產 Swire Properties

地盤 Sites

環球貿易廣場 麗嘉酒店
Internation Commerce Centre
The Ritz-Carlton Hotel
葡萄薈 La Grande Vineyard
壹號雲頂二期-雲頂峰 Sky One
YOHO Midtown
逸林首府 One Hyde Park
天籟 Valais
挪亞方舟 Noah's Ark
泉薈 Roco
掃管笏項目 So Kwun Wat Project
青龍頭項目 Tsing Lung Tau Project
南灣 Larvotto

銀湖, 天峰 Lake Silver

海峯 Vista

御凱 The Dynasty

雙魚河 Goodwood Park

承峰 The Balmoral

黃大仙 親仁街3號項目

No.3 Chun Yan Street

QRE PLAZA

GARDEN EAST

馬鞍山77區項目 Area 77 Ma On Shan

柏惠豪庭 Central Park Towers

尚御 Meridian Hill

大圍火車站上蓋

MTR Tai Wai Under Construction

半山壹號二期-富甲半山

Celestial Heights Phase II

日出康城 Lohas Park

南灣御園 Jadewater

上林 Serenade

YORK PLACE

雍雅山房 重建項目

豪門二期 御·豪門 Le Billionnaire II

滙豪山 The Forest Hills

國際廣場 Isquare

司徒拔道53號住宅項目 No.53 Stubbs Road



澳門地盤 Sites in Macau

澳門新口岸壹號湖畔

澳門夢幻之城渡假村

澳門新葡京酒店

One Central Macau

City of Dream Macau

Grand Lisboa Macau

本公司陸續向新開的地盤供貨。包括新的品種如有需要請向本公司查詢。
We keep supplying materials, including new products, to new construction sites.
Should you have any enquiries, please do not hesitate to contact us.



JOB REFERENCE 工作範圍



香港房屋委員會 Housing Department

發展商Developers

俊和發展集團
Chun Wo Development Holdings Limited
西松建設株式會社 Nishimatsu Construction Co., Ltd
中國建築國際集團有限公司
China State Construction International Holdings Ltd

瑞安承建有限公司
Shui On Building Contractors Limited

保華建築營造有限公司
Paul Y. General Contractors Limited

興勝建築有限公司
Hanison Construction Company Limited

地盤Sites

黃大仙上邨3期
Upper Wong Tai Sin Estate Phase III
東濤苑 Tung Tao Court
元州街邨5期 Un Chau Estate Phase V
粉嶺36區二期 Fanling Area 36 Phase II
紅磡村二期 Hung Hom Estate Phase II
彩雲道一、二期 Choi Wan Road Phase I, II
藍田邨 7 & 8期 Lam Tin Estate Phase 7, 8
石硤尾邨五期 Shek Kip Mei Estate Phase V
將軍澳73B區 Area 73B Tseung Kwan O
牛頭角上邨重建二、三期
Upper Ngau Tau Kok Estate Phase II, III
彩雲道二區一期
Area 2, Phase I, Choi Wan Road



建築署 Architectural Services Department

添馬艦發展工程	Tamar Development Project
旺角大球場改善工程	Mong Kok Stadium Project
香港體育學院	Hong Kong Sports Institute
沙田 白石 單車訓練場	Whitehead Bicycle training Centre
天水圍公共圖書館兼體育館	Tin Shui Wai Public Library & Sports Centre
上水第28A區運動場館	28A Sports Centre Sheung Shui
東涌新市鎮第2區游泳池場館	Tung Chung Swimming Pool
南朗醫院 - 擴建大樓	Nam Long Hospital The Extension Project
養和醫院 - 擴建大樓	H.K. Sanatorium & Hospital The Extension Project
屯門醫院 - 擴建大樓	Tuen Mun Hospital The Extension Project
沙田 威爾斯親王醫院 - 擴建大樓	Prince of Wales Hospital The Extension Project
理工大學-百瑞園	HK Community Coll
香港城市大學	City University of HK
香港專業教育學院-屯門、青衣分校	HK Institute of Vocational Ed.(IVE) Tuen Mun, Tsing Yi
蒲崗村道的地區休憩用地	Po Kong Village Road Recreational Land Use
將軍澳86區中央公園地盤	Tseung Kwan O Central Park
牛池灣公園	Ngau Chi Wan Park
愛秩序灣海濱花園	Aldrich Bay Promenade
南九龍裁判署	South Kowloon Magistacies



本港之百多間中小學基建及擴建工程。

Construction and extension projects of over 100 primary school secondary school campuses in Hong Kong.

其他(公共設施)Others (Public Facilities)

港鐵 柯士甸站 尖東站	MTR Austin, East Tsim Sha Tsui Station
海洋公園擴展工程	New Ocean Park Infrastructure
香港會展三期	HKCEC Phase III
亞洲協會香港分會	Asian Cultural Council



本公司陸續向新開的地盤供貨。包括新的品種如有需要請向本公司查詢。
We keep supplying materials, including new products, to new construction sites.
Should you have any enquiries, please do not hesitate to contact us.



俊業五金鑄造有限公司
Gent-Year Metal Foundry Limited

版權所有, 翻印必究 All rights reserved
Tel: 2473 2996 Fax: 2473 2887